

8.92 Acres Waterfront \$37,777



**28526 Sherman Lake Loop
Ottertail, MN**

Three Waterfront Lots on Sherman Lake

Beautiful wooded lots in the heart of Lake Country

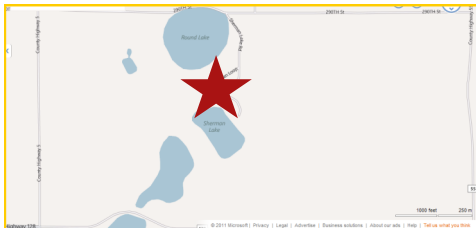
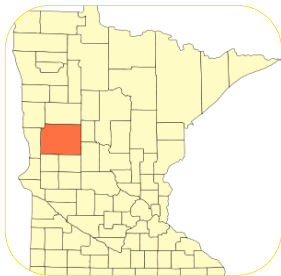
Only 1.5 hours west of Brainerd and just three miles from the city of Ottertail. Near Balmoral Golf Course and a bounty of recreational lakes including Round Lake and Pickerel Lake.

Three Adjacent Lots — Up to 8.92 Acres: Lot "Track 1" is 3.04 acres, Lot "Track 2" is 2.97 acres, and Lot "Track 3" is 2.91 acres. All three lots may be purchase for \$37,777. The zoning classification is Seasonal Residential Recreation.

Perfect area for a seasonal cabin, hunting tract, or the ultimate year round cabin style retreat home amidst Minnesota's famous lakes!

Call today for your personal showing!

The information herein was obtained from sources deemed to be reliable. The information includes projections, assumptions and estimates as examples only and of a forecast nature yet may not represent actual, current or future performance. We make no guarantees or warranties. It is submitted subject to the possibility of withdrawal without notice, errors, change of price, omissions, financing, rental or other conditions. You and your tax and legal advisors should conduct your own investigation of the property and contemplated or proposed transactions. Copyright 2011 ROCK SOLID Commercial.



Last Updated: Thursday, November 03, 2011

Rock Solid
COMMERCIAL

Providing Exceptional Personal Service

www.rocksolidcommercial.com

Delivering Exceptional Positive Results

**ROCK SOLID Companies
is Your FULL SERVICE
Real Estate Brokerage**

Commercial, Property Management,
Troubled Assets, Court Receivership,
Investment/Equity, 1031 Exchange
Residential, Property Development
and Vacation/Coastal Properties.

Licensed in Minnesota & Florida

Contact:

Ron Touchette Broker

612.435.7777

ron@rocksolidcommercial.com

7078 E. Fish Lake Rd., Maple Grove, MN 55311 Main: 612.435.7770 Fax: 612.435.7771