

# Twin Ponds Estates Lots \$37,777 Each



## Twin Ponds Curve Savage, MN



## Three Adjacent ~.30 Acre Lots in Twin Ponds Estates

Nice, level lots in prestigious Twin Ponds Estates.

Natural, green location with lots of open space. Close to schools, parks and shopping. Just a few miles from the County Road 42 and I35W Interchange.

Savage is a great family-oriented community with an outdoor public pool, library, farmer's market and parks music program.

Three adjacent lots remain available. No builder restrictions are in place, bring in your own builder. This is the perfect time to build, buy one lot or all three and realize your dream home today!

# Rock Solid COMMERCIAL

*Providing Exceptional Personal Service*

[www.rocksolidcommercial.com](http://www.rocksolidcommercial.com)

*Delivering Exceptional Positive Results*

**ROCK SOLID Companies  
is Your FULL SERVICE  
Real Estate Brokerage**

Commercial, Property Management,  
Troubled Assets, Court Receivership,  
Investment/Equity, 1031 Exchange  
Residential, Property Development  
and Vacation/Coastal Properties.

Licensed in Minnesota & Florida

Contact:

# Ron Touchette

 Broker

# 612.435.7777

[ron@rocksolidcommercial.com](mailto:ron@rocksolidcommercial.com)

7044 E. Fish Lake Rd., Maple Grove, MN 55311 Main: 763.786.7979 Fax: 763.416.7817

# Twin Ponds Estates Lots \$37,777 Each

## Twin Ponds Curve Savage, MN

### Demographics

### Community-at-a-Glance

County Seat:

**Scott**

Population:  
**26,928**

Median Age:  
**31.4**

Average Family Size:  
**3.56**

Median Single Family  
Home Value:  
**\$282,200**

Median Household Income:  
**\$92,472**

Commute Time (minutes):  
**25.6**

\*2006-2008 American Community Survey  
US Census Bureau

General Characteristics	Number	Percentage
Total population	26,926	—
<i>Male</i>	13,144	48.8
<i>Female</i>	13,782	51.2
Median age (years)	31.4	—
<i>Under 5 years</i>	2,182	8.1
<i>18 years and over</i>	18,163	67.5
<i>65 years and over</i>	1,035	3.8
Average household size	3.13	—
Average family size	3.46	—
Total housing units	9,090	—
Social Characteristics	Number	Percentage
Population 25 years and over	15,807	—
Male, now married	6,000	63.8
Female, now married	6,022	59.2
Economic characteristics	Number	Percentage
In labor force	15,759	82.4
Mean travel time to work (minutes)	25.6	—
Median household income (dollars)	92,472	—
Median family income (dollars)	101,196	—
Per capita income (dollars)	33,642	—
Housing Characteristics	Number	Percentage
Single-family owner-occupied homes	7,632	—
<i>Median value (dollars)</i>	292,200	—
Median of selected monthly owner costs with mortgage (dollars)	2,016	—

**Rock Solid**  
COMMERCIAL

*Providing Exceptional Personal Service*

[www.rocksolidcommercial.com](http://www.rocksolidcommercial.com)

*Delivering Exceptional Positive Results*

**ROCK SOLID Companies**  
is Your **FULL SERVICE**  
**Real Estate Brokerage**

Commercial, Property Management,  
Troubled Assets, Court Receivership,  
Investment/Equity, 1031 Exchange  
Residential, Property Development  
and Vacation/Coastal Properties.

Licensed in Minnesota & Florida

Contact:

**Ron Touchette** Broker

**612.435.7777**

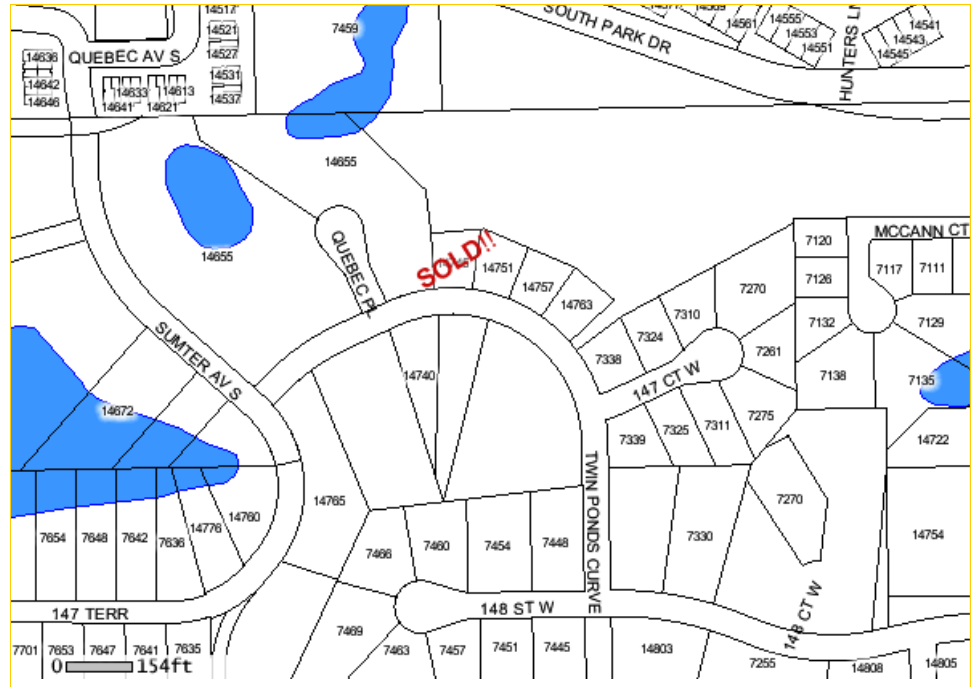
[ron@rocksolidcommercial.com](mailto:ron@rocksolidcommercial.com)

7044 E. Fish Lake Rd., Maple Grove, MN 55311 Main: 763.786.7979 Fax: 763.416.7817



# Twin Ponds Estates Lots \$37,777 Each

## Twin Ponds Curve Savage, MN



Lots are \$37,777 each. Buyer assumes all assessments.

The information herein was obtained from sources deemed to be reliable. The information includes projections, assumptions and estimates as examples only and of a forecast nature yet may not represent actual, current or future performance. We make no guarantees or warranties. It is submitted subject to the possibility of withdrawal without notice, errors, change of price, omissions, financing, rental or other conditions. You and your tax and legal advisors should conduct your own investigation of the property and contemplated or proposed transactions. Copyright 2008 ROCK SOLID Commercial.

Last Updated: Friday, September 17, 2010



# Rock Solid

## COMMERCIAL

*Providing Exceptional Personal Service*

[www.rocksolidcommercial.com](http://www.rocksolidcommercial.com)

*Delivering Exceptional Positive Results*

**ROCK SOLID Companies**  
is Your **FULL SERVICE**  
Real Estate Brokerage

Commercial, Property Management,  
Troubled Assets, Court Receivership,  
Investment/Equity, 1031 Exchange  
Residential, Property Development  
and Vacation/Coastal Properties.

Licensed in Minnesota & Florida

Contact:

# Ron Touchette

Broker

# 612.435.7777

[ron@rocksolidcommercial.com](mailto:ron@rocksolidcommercial.com)

7044 E. Fish Lake Rd., Maple Grove, MN 55311 Main: 763.786.7979 Fax: 763.416.7817